

ebm Industries, Inc.
110 Hyde Road
Farmington, CT 06034
Tel 203-674-1515
Fax 203-674-8536

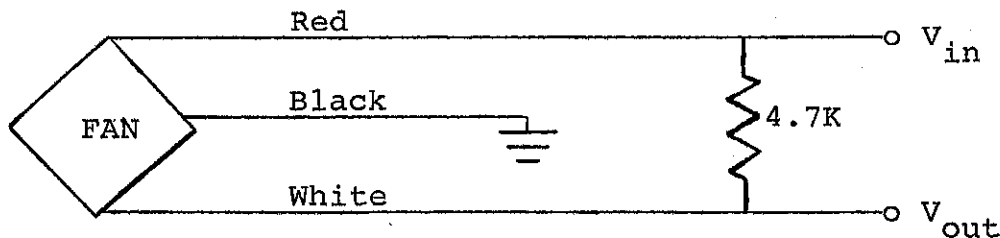
TECHNICAL DATA RELEASE

17 April 1982

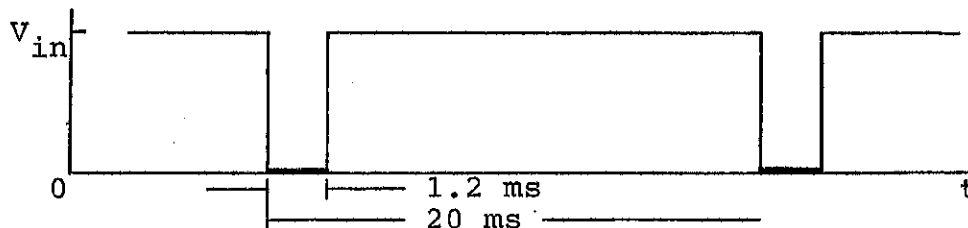
HALL EFFECT MONITOR

DESCRIPTION: ebm product incorporating a Hall effect monitor have a magnet and a solid state switch built into the motor. The magnet is positioned to create a pulsed output having a period inversly proportional to the fan's rotational speed and an amplitude approximately equal to the input voltage. A change in this signal resulting from fan malfunction can be used to trigger an orderly system shut-down, an audible or visual alarm, etc. This device is typically used by manufacturers of computers, peripherals, copiers or other business machines that would require immediate reaction to fan or motor malfunction.

INPUT: 4.5 to 16 VDC

WIRING:

OUTPUT: The following depicts the output for a 3,000 RPM fan.



OPERATING TEMPERATURE: -20 to +60 °C

HALL EFFECT SEMICONDUCTOR: Sprague UGN-3013T